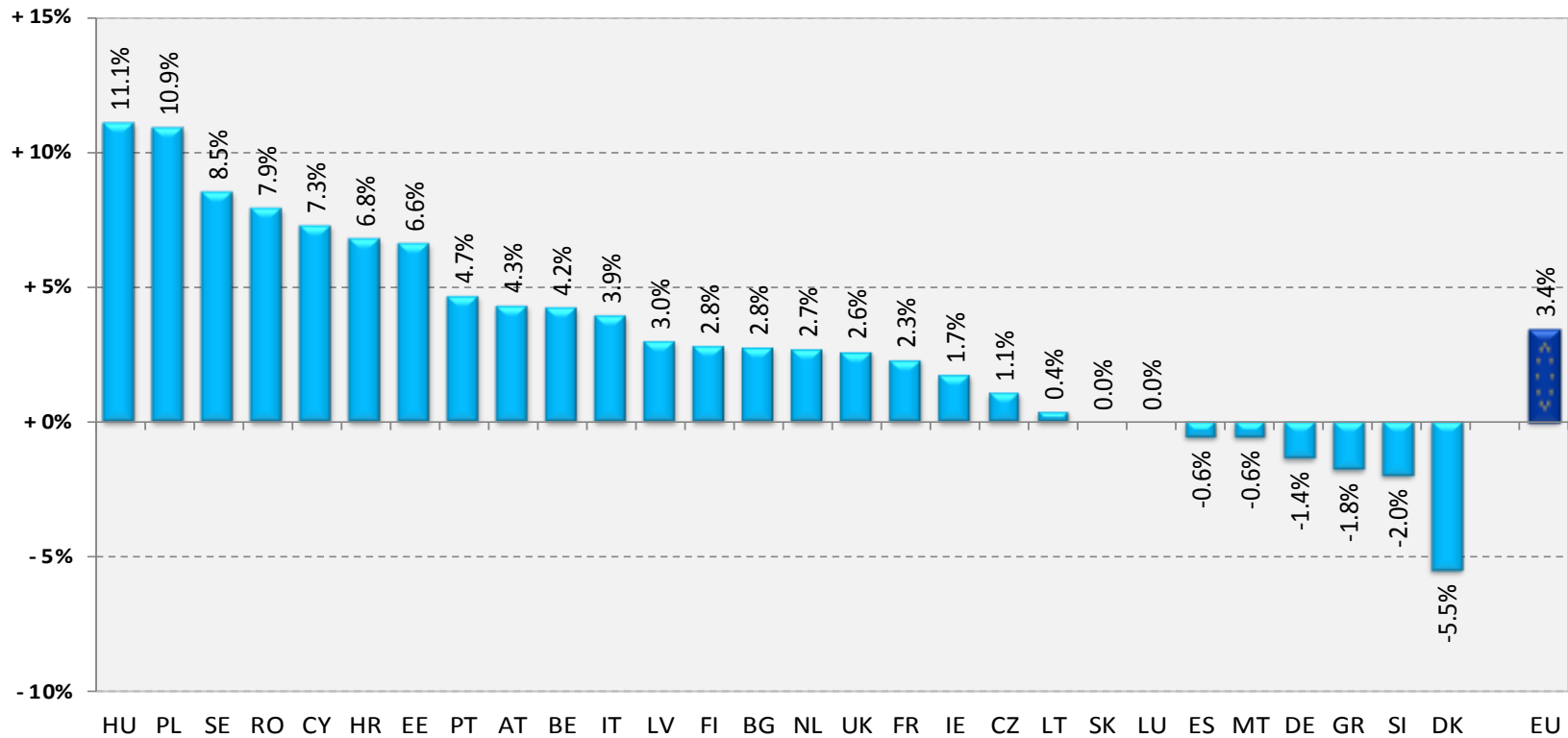


# EU Market Situation for Poultry

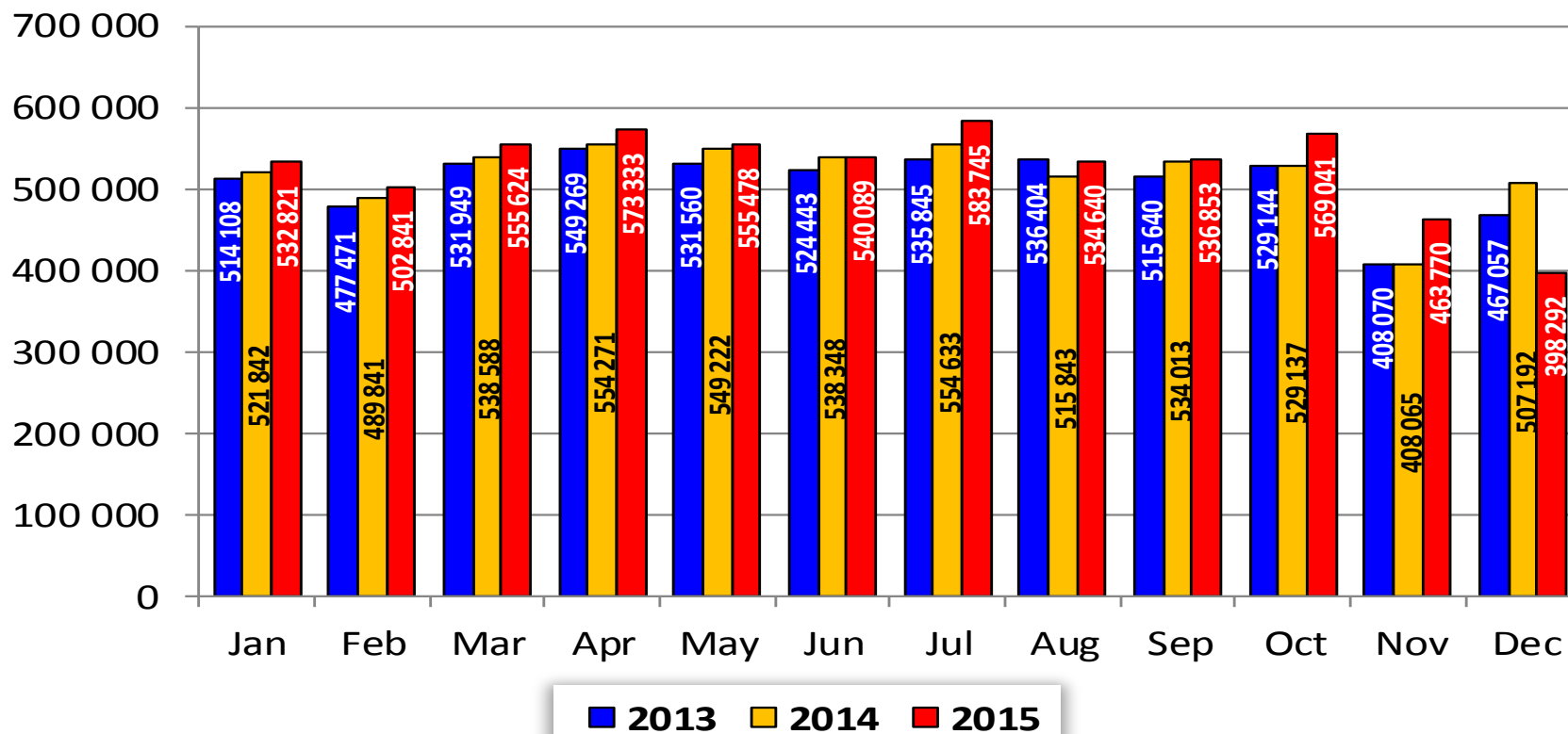
Committee for the  
Common  
Organisation of the  
Agricultural Markets  
18 February 2016



## Change in **Poultry** slaughter Jan.-Nov. 2015 compared with Jan.-Nov. 2014



## Placings of broiler chicks (1 000 pieces)



# PRICES



European  
Commission

Prices

EU  
WEEK PRICES

6

EVOLUTION SINCE

last WEEK

last MONTH

last YEAR

**BROILER**

**176.17**

€/100 kg cw

- 1.0%

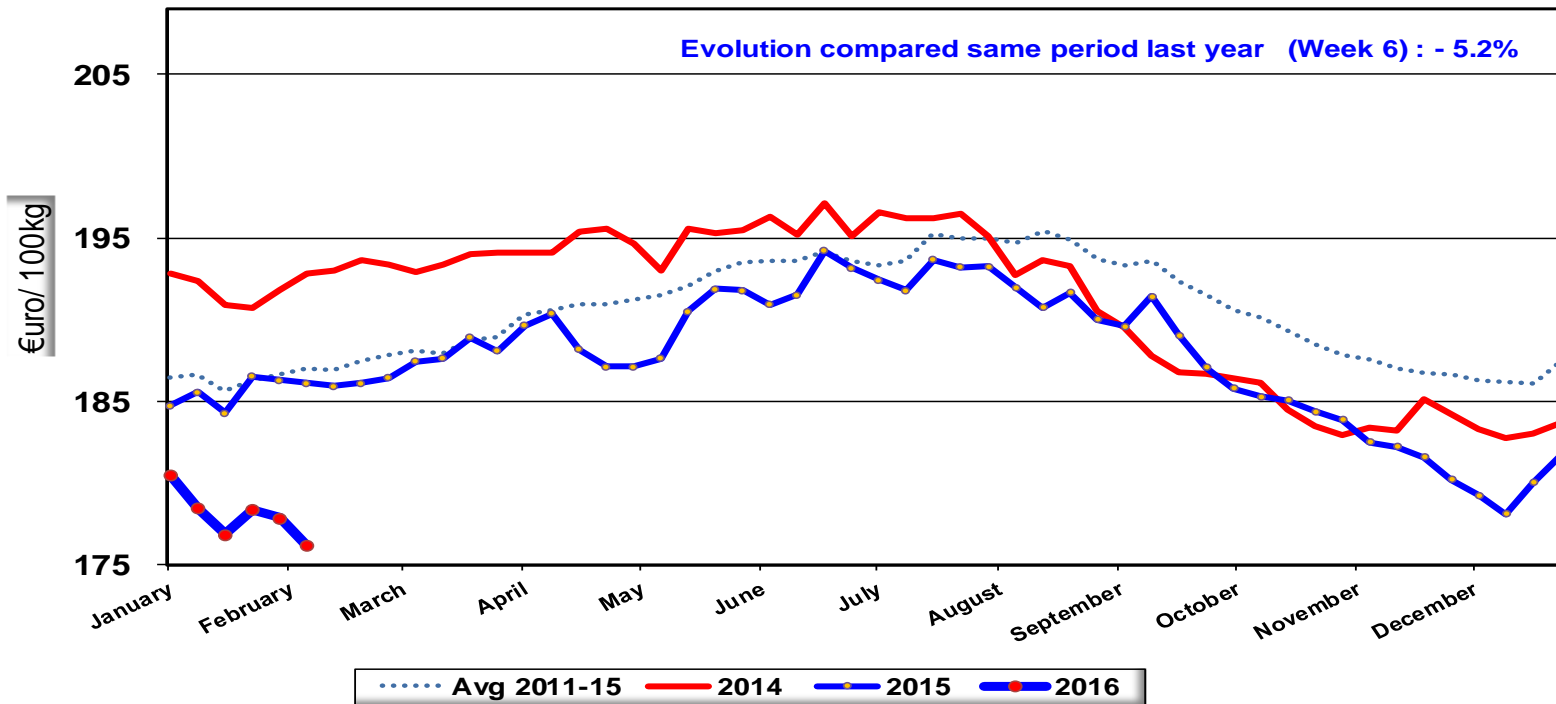
- 1.3%

- 5.2%



## Evolution of the weekly EU average price for Broiler

**Latest price (Week 6) : 176.17 EUR/100 kg**



Source: MSs notifications (Regulation (EC) 546/2003)





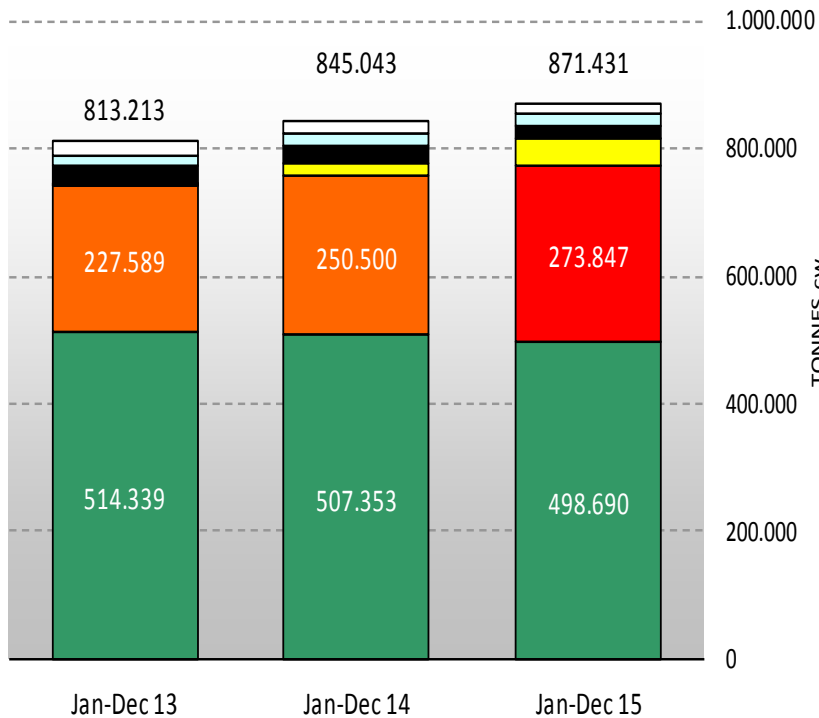
## Imports of Poultry meat from selected origins

	2011		2012		2013		2014		Jan-Dec 15		Compared to Jan-Dec 14
	tonnes	%	tonnes	%	tonnes	%	tonnes	%	tonnes	%	
Brazil	615.832	71.9%	583.449	67.3%	514.339	63.2%	500.569	59.7%	498.690	57.2%	- 2%
Thailand	155.788	18.2%	197.962	22.8%	228.238	28.0%	250.338	29.9%	273.847	31.4%	+ 9%
Ukraine	31	0.0%			276	0.0%	19.928	2.4%	42.330	4.9%	+ 112%
Chile	44.433	5.2%	42.192	4.9%	30.515	3.7%	25.801	3.1%	22.231	2.6%	- 14%
China	13.874	1.6%	15.698	1.8%	18.145	2.2%	19.703	2.4%	18.395	2.1%	- 7%
Argentina	15.700	1.8%	13.766	1.6%	10.783	1.3%	10.993	1.3%	8.529	1.0%	- 22%
Switzerland	1.253	0.1%	3.817	0.4%	3.817	0.5%	4.234	0.5%	2.427	0.3%	- 44%
Israel	7.144	0.8%	6.075	0.7%	6.306	0.8%	2.413	0.3%	1.284	0.1%	- 47%
Others	3.036	0.4%	4.244	0.5%	1.412	0.2%	3.956	0.5%	3.697	0.4%	
EXTRA EU 28	857.092		867.203		813.832		837.935		871.431		
% change			+ 1%		- 6%		+ 3%		+ 3.1%		

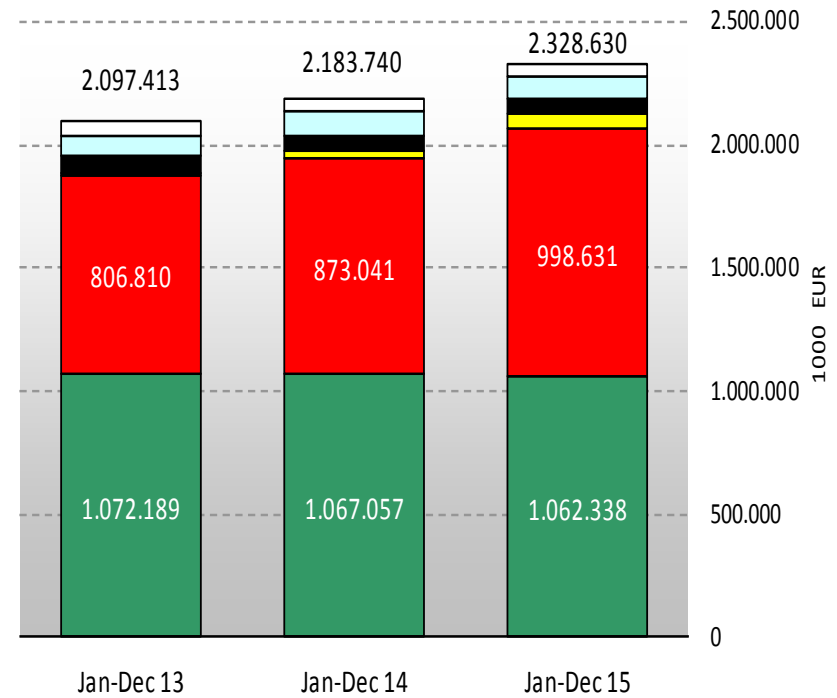


## EU Poultry meat Imports

EU IMPORTS of Poultry Meat (TONNES cwe)



EU IMPORTS of Poultry Meat (1000 EUR)



■ Brazil ■ Thailand ■ Ukraine ■ Chile ■ China ■ Other origins

■ Brazil ■ Thailand ■ Ukraine ■ Chile ■ China ■ Other origins





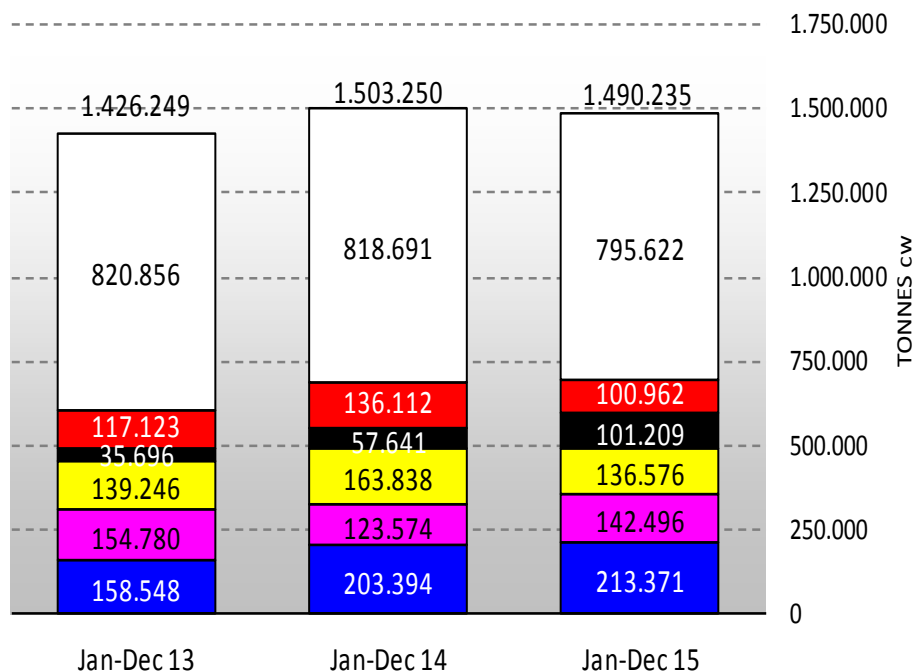
## Exports of Poultry Meat to Selected Destinations

	2011		2012		2013		2014		Jan-Dec 15		Compared to Jan-Dec 14
	tonnes	%	tonnes	%	tonnes	%	tonnes	%	tonnes	%	
South Africa	94.083	6.7%	131.832	9.2%	158.510	11.1%	203.414	13.5%	213.371	14.3%	+ 5%
Saudi Arabia	151.520	10.7%	149.310	10.4%	154.775	10.9%	123.559	8.2%	142.496	9.6%	+ 15%
Benin	126.213	8.9%	139.817	9.8%	139.247	9.8%	163.793	10.9%	136.576	9.2%	- 17%
Philippines	30.341	2.1%	30.764	2.2%	35.674	2.5%	57.621	3.8%	101.209	6.8%	+ 76%
Hong Kong	189.151	13.4%	126.072	8.8%	117.152	8.2%	136.088	9.0%	100.962	6.8%	- 26%
Ukraine	81.687	5.8%	103.427	7.2%	75.966	5.3%	80.208	5.3%	91.064	6.1%	+ 14%
Ghana	68.978	4.9%	69.156	4.8%	75.216	5.3%	56.883	3.8%	68.799	4.6%	+ 21%
Gabon	25.601	1.8%	26.298	1.8%	25.070	1.8%	29.409	2.0%	37.316	2.5%	+ 27%
Congo (Dem. Rep.)	29.972	2.1%	34.231	2.4%	28.625	2.0%	33.723	2.2%	36.086	2.4%	+ 7%
Congo	18.488	1.3%	18.179	1.3%	22.242	1.6%	26.634	1.8%	33.952	2.3%	+ 27%
Russia	115.136	8.1%	113.134	7.9%	95.179	6.7%	68.325	4.5%	1.232	0.1%	- 98%
Other Destinations	482.475	34.1%	488.335	34.1%	498.709	35.0%	524.229	34.9%	527.172	35.4%	
Extra-EU 28	1.413.647		1.430.554		1.426.365		1.503.885		1.490.235		
% change			+ 1%		- 0%		+ 5%		- 0.9%		



## EU Poultry meat Export

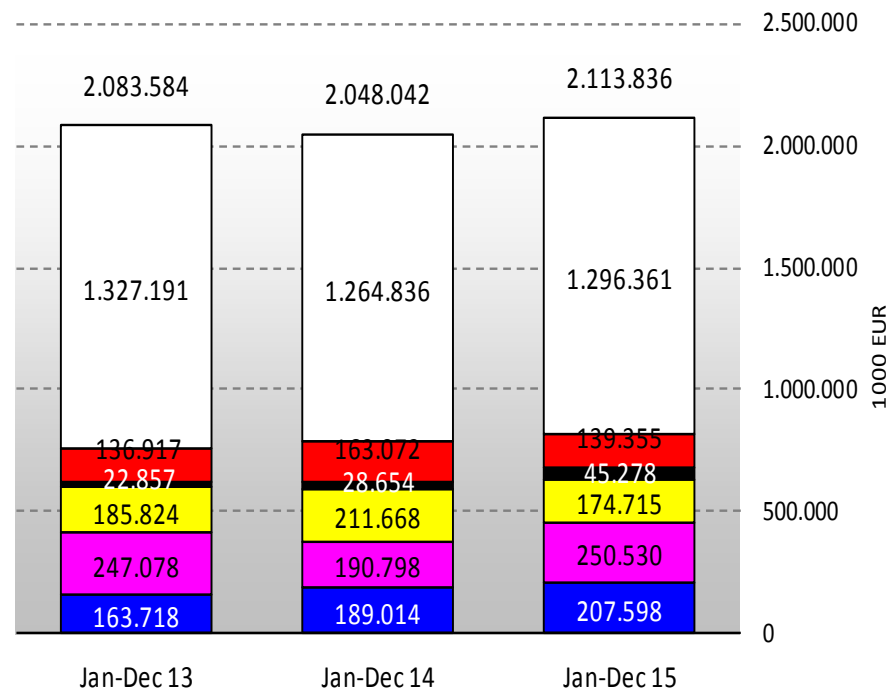
### EU EXPORTS of Poultry Meat (TONNES cwe)



■ South Africa ■ Saudi Arabia ■ Benin ■ Philippines ■ Hong Kong □ Other destinations \*

\* countries trading less than 92 000 Tons

### EU EXPORTS of Poultry Meat (1000 EUR)

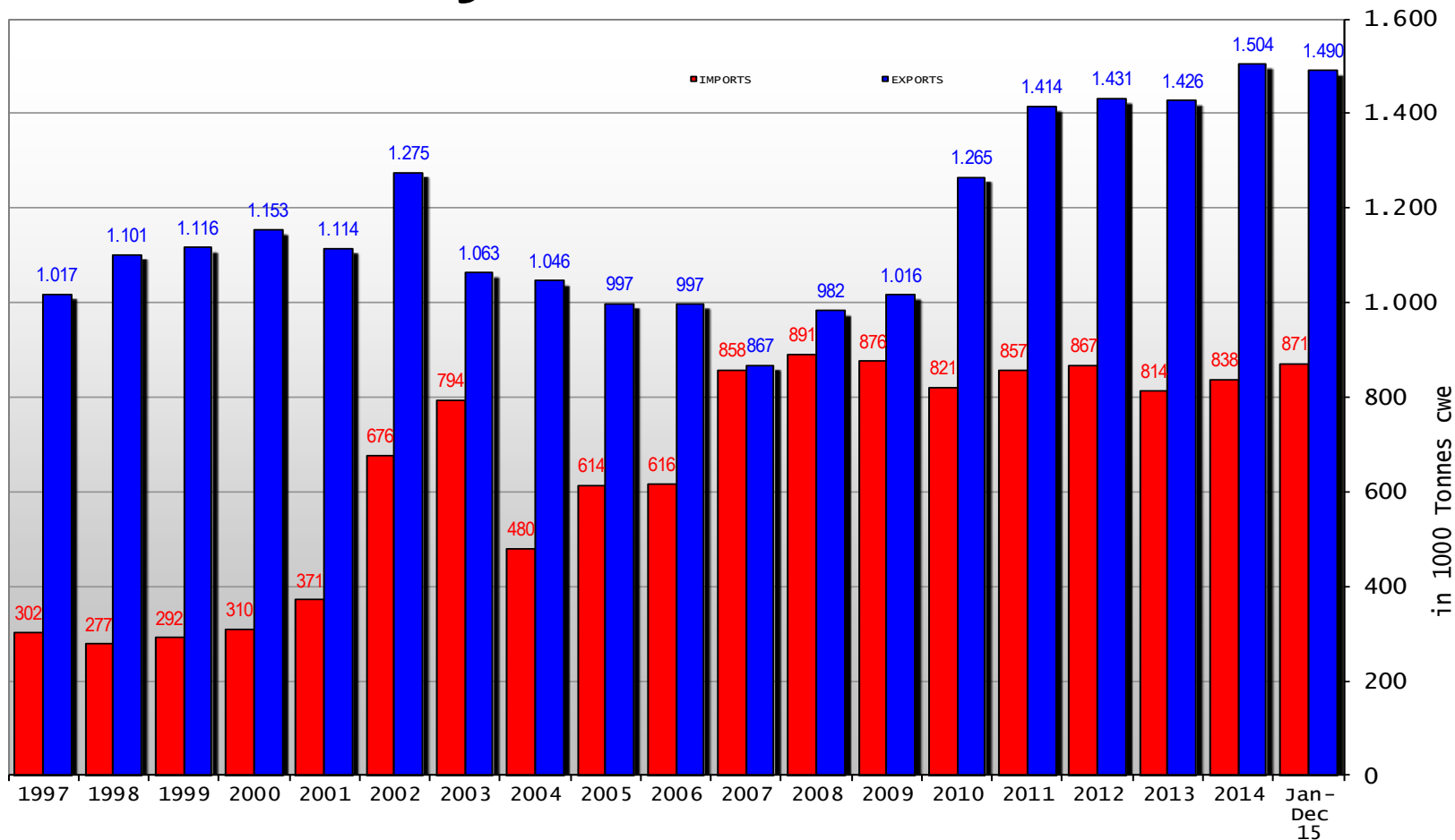


■ South Africa ■ Saudi Arabia ■ Benin ■ Philippines ■ Hong Kong □ Other destinations \*

\* countries trading less than 151 000 ('000 EUR)



# EU Poultry meat Trade Balance





- High number of outbreaks in SW of France: between 24/11/15 and 10/02/16, **71 cases in 8 departments**, with mostly waterfowls holdings affected (geese and duck or mixed holdings). In total **15 departments** placed into the **restriction zone**
- France is actively taking standard veterinary measures to eradicate disease (Council Directive 2005/94/EC)
- On the top of standard measures, as from 18/1/15, a **generalised depopulation for day-old chicks and ducklings and goslings within the restriction zone**, followed by thorough removal of contamination. The ban for the restocking of waterfowl would last over a period of 15 weeks
- **Key trading partners accepted 'regionalisation'** (e.g. Saudi Arabia, Benin, United Arab Emirates, Hong Kong)
- **Country-wide restrictions imposed by several trading partners** (e.g. China, Egypt, India, Japan, Morocco, Malaysia, South Africa, South Korea, Taiwan)



## Follow market updates via the Poultry meat Dashboard

[http://ec.europa.eu/agriculture/dashboards/index\\_en.htm](http://ec.europa.eu/agriculture/dashboards/index_en.htm)

## Where to find data:

- [http://ec.europa.eu/agriculture/markets/index\\_en.htm](http://ec.europa.eu/agriculture/markets/index_en.htm)
- **Click on link: Poultry**
- **Click on link: Presentations and prices**  
**(righthand side under: in this chapter)**
- **Choose the item (link) you want**